
SUGGESTED APPLICATION AND REMOVAL PROCEDURES FOR CATU MT- 613 SNAP ON EARTHING SYSTEMS.

After setting up the work site in accordance with all Local Regulatory work procedures and rules, unload earth set from the vehicle, remove it from the carry bag and lay it out on the ground near the work site.

CHECK VISUALLY FOR ANY SIGNS OF DAMAGE OR DETERIORATION TO THE CLAMPS, LEADS AND CONNECTIONS INCLUDING THE CRIMP AND HEAT SHRINK AREA.

BEFORE APPLYING ANY EARTHS, PROVE THE CONDUCTORS ARE DE-ENERGISED WITH A SUITABLE DETECTOR.

APPLICATION OF THE EARTH SYSTEM

Fit the MT-630-C Application platform to the end of the fibreglass operating stick, making sure it is locked into the stick top.

Apply the earth lead hand clamp to the driven earth stake or known earth point making sure it is tight.

Cock the MT-613 Conductor clamp on the other end of the earth lead by pushing upwards on the outer part of the tongue until it latches.

WARNING: WHEN HANDLING THESE EARTHS, DO NOT PLACE FINGERS INTO THE MOUTH OF THE LATCHED CLAMP.

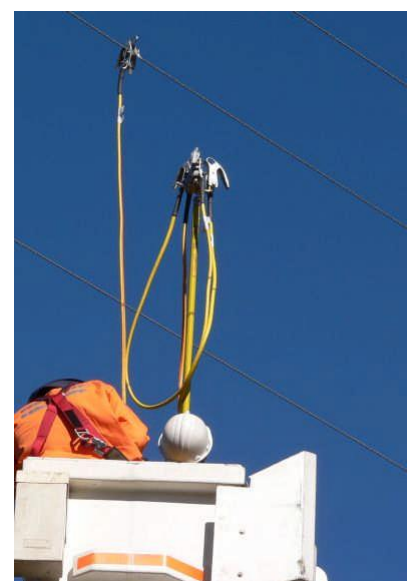
Fit the cocked MT-613 Clamp onto the MT-630-C Platform by placing the steel tag on the bottom of the clamp into one of the sockets on the platform with the open mouth of the clamp to the outside and push down until it has locked into position.



Using the operating rod, position the earth lead clamp above the phase conductor to which the earth lead is to be attached preferably the centre phase, and with a smooth downward motion, pull the clamp onto the conductor until it triggers and snaps on to the conductor, continuing the downward motion until the clamp has separated from the platform.



Using the same method, cock each of the three clamps on the phase/shorting lead set and fit into the three sockets on the platform. Apply this set with the same smooth downward motion as before, until each clamp separates from the platform. When fitting the clamp to an outer phase, make sure the removal eye at the top of the clamp is towards the center phase i.e. the open mouth of the clamp is facing outwards.



The bridging set is usually applied in the sequence: center phase – outer phase – outer phase, ensuring that the clamp with the two leads is applied to the center phase, and the outer phase clamps are attached with the removal eye at the top of the clamp is towards the center phase and the open mouth of the clamp facing outwards.

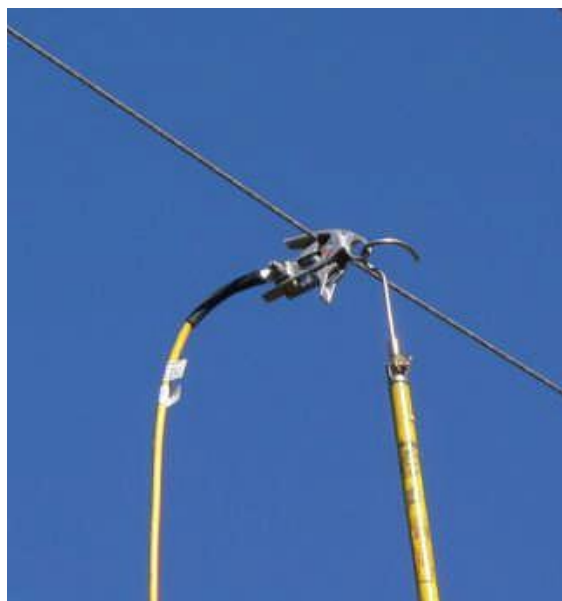
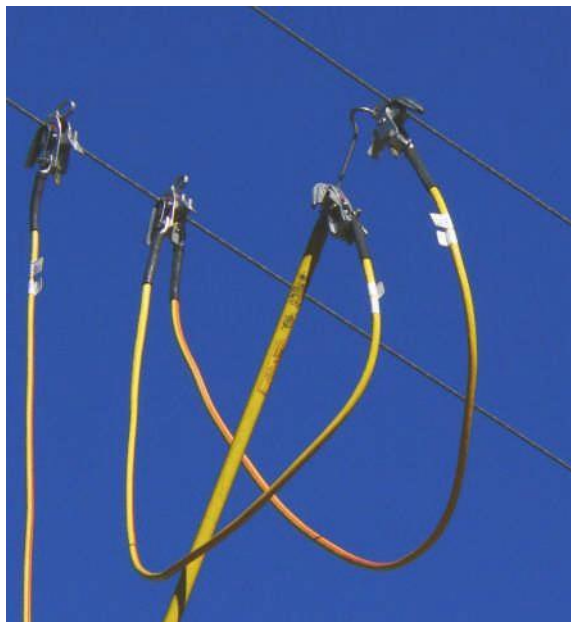
REMOVAL OF MT-613 EARTH SETS

Remove the MT-630 application platform and fit the Clamp Removal Adaptor (CRA pigtail) to the end of the fiberglass operating stick making sure it is locked into the stick top, and then rotate the end of the stainless steel pigtail arm through the removal eye at the top of the MT-613 Clamp until it can go no further.

The clamp is now pulled smoothly until it has rotated and separated from the conductor and swings free and slides down the arm of the CRA, if the clamps becomes stuck rotate the stick to make the clamp slide down the CRA shaft.

It is suggested that you remove the separate phase/shorting set from the conductors in reverse to the application procedure, i.e.:- outer phase – outer phase – center phase. This ensures that the total weight is in a straight up and down position as the centre phase clamp comes off, not out at an angle. Lower the stick and phase/shorting set to the ground for removal from the CRA, slide each of the clamps up the shaft of the CRA until they have been removed.

Send the stick and CRA back up and then remove the last clamp of the earth lead in the same way and lower this to the ground. Disconnect the hand clamp from the earth stake, check and roll up system, and place back into carry bag.



POINTS TO REMEMBER

- 1. ALWAYS CHECK EARTH SYSTEMS FOR DAMAGE OR DETERIORATION BEFORE AND AFTER USE.**
- 2. USE A SMOOTH CONTINUOUS ACTION WHEN APPLYING OR REMOVING CLAMPS.**
- 3. ALWAYS APPLY THE CLAMP WITH THE TWO LEADS TO THE CENTRE PHASE.**
- 4. APPLY THE CLAMPS ON THE OUTER PHASES WITH THE REMOVAL EYE FACING THE CENTRE PHASE.**
- 5. THESE EARTH SYSTEMS ARE TYPE TESTED AS A SYSTEM, SO ALWAYS ENSURE THE POTENTIAL FAULT LEVEL THAT COULD BE PRESENT AT THE POINT OF APPLICATION DOES NOT EXCEED THE EARTH SYSTEM RATING AND NEVER CHANGE OR MODIFY THE EARTHS.**
- 6. LOOK AFTER THE EARTHING EQUIPMENT.**
- 7. NEVER DROP THE CLAMPS OR OPERATING STICK FROM HEIGHTS.**
- 8. REMEMBER THEY ARE FOR YOUR SAFETY AND PROTECTION.**